

# RNDIS Windows Driver Installation Guide

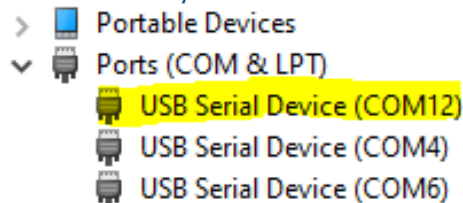
---

## Driver Download:

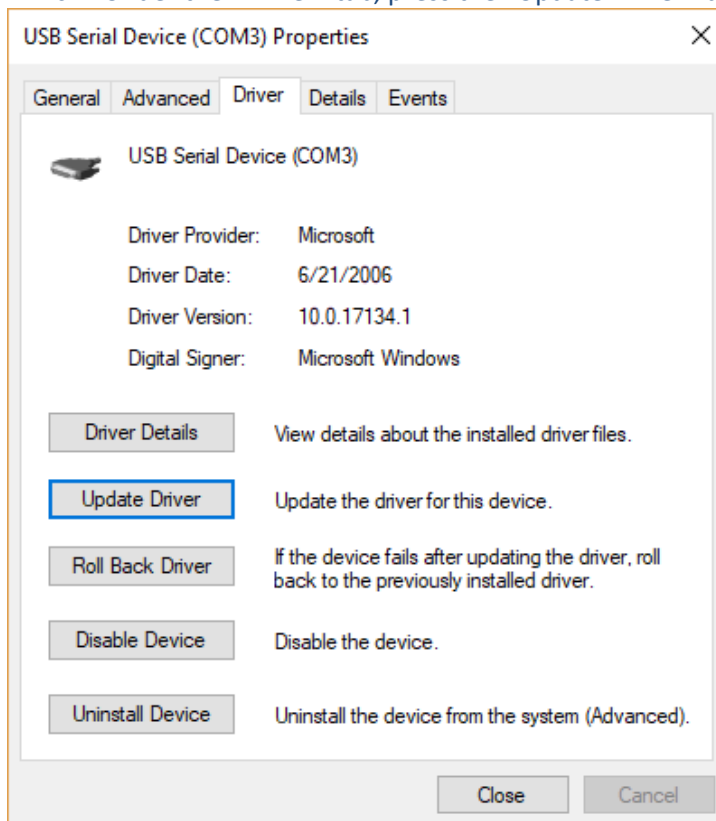
1. Navigate to the [Expert Elite](#) support page on the Digital Check website to download the RNDIS driver.
  - a. Once on the [Expert Elite](#) support page, right click on “RNDIS Windows Driver” link to save the RNDIS driver. The driver will be in the form of a .cab file.
2. Extract the content of the .cab file to a folder.
  - a. To extract the content, double click on the .cab file to open it.
  - b. Copy the two files(RNDIS.inf, rndis.cat) and paste them to a folder of choice.
    - i. This folder will be the location you will need to browse to during the Driver Update instructions below.

## Driver Update:

1. Connect the USB and power cable to the scanner and then press the power on button.
2. Open Device Manager and navigate to “Ports (COM & LPT)”.
  - a. Look for the newly created “USB Serial Device (COMx)”, where x can be any number.



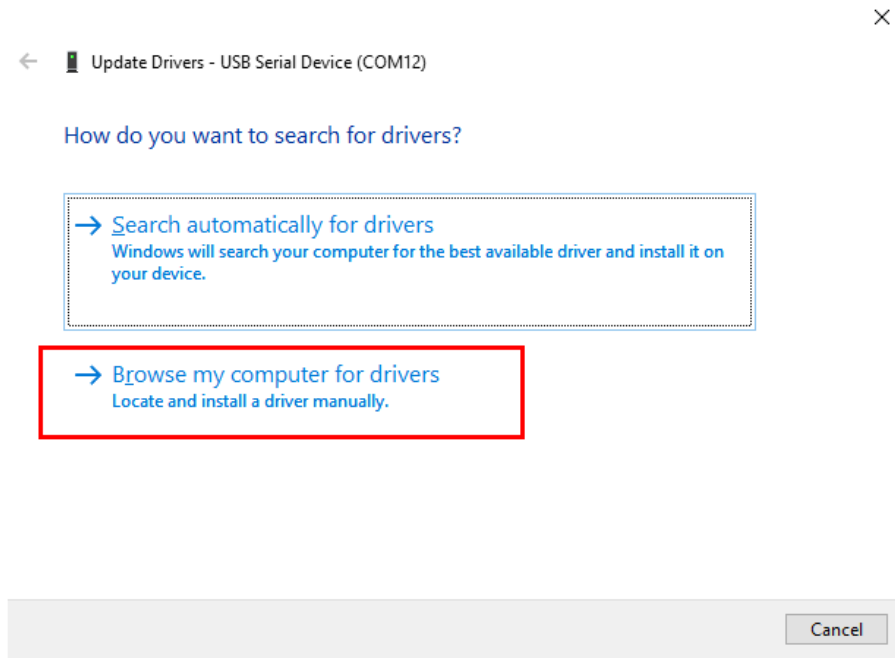
- b. Right click on “USB Serial Device (COMx)” and select Properties.
- c. Under the “Driver” tab, press the “Update Driver” button.



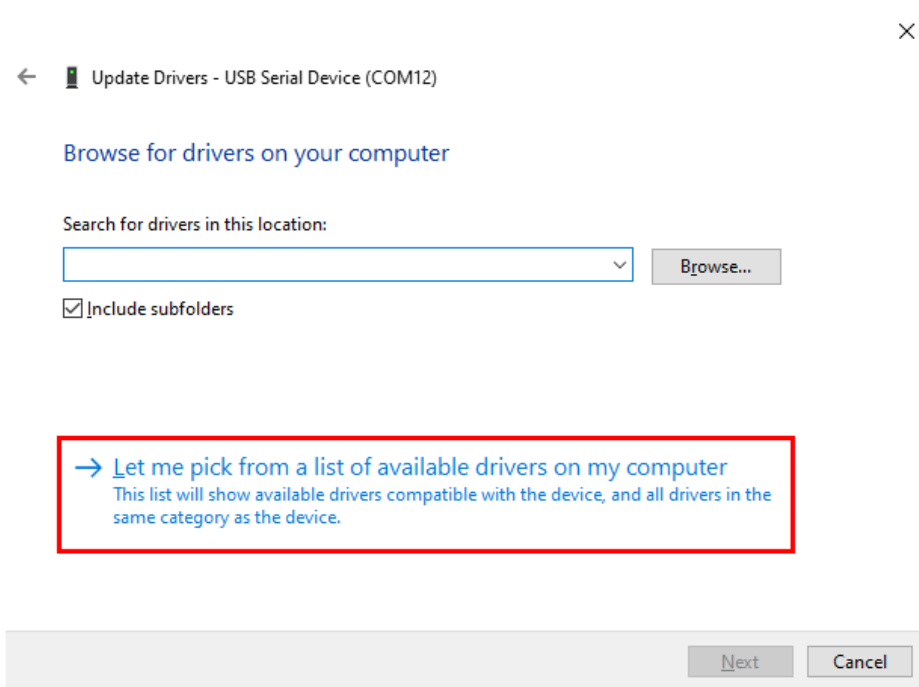
# RNDIS Windows Driver Installation Guide

---

## 3. Select "Browse my computer for drives"

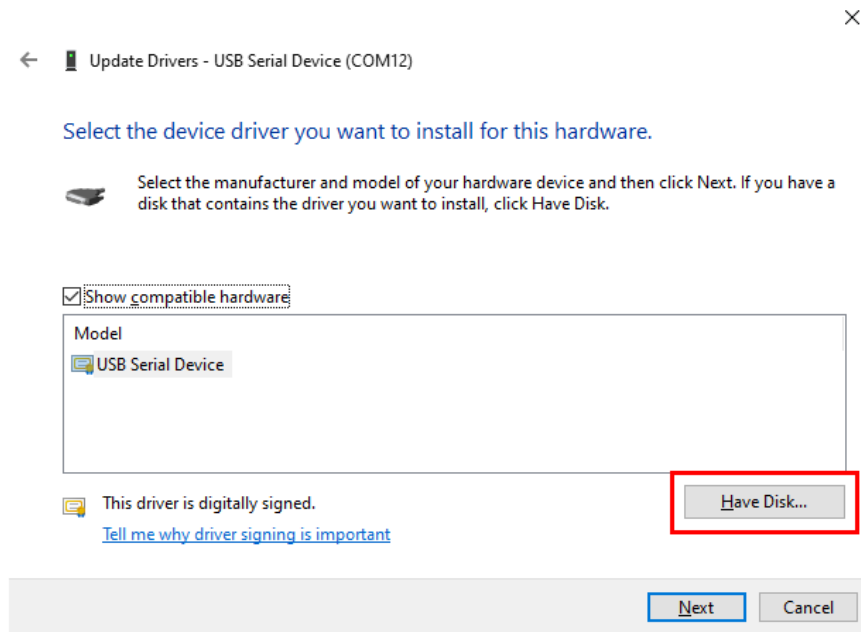


## 4. Select "Let me pick from a list of available drivers on my computer"

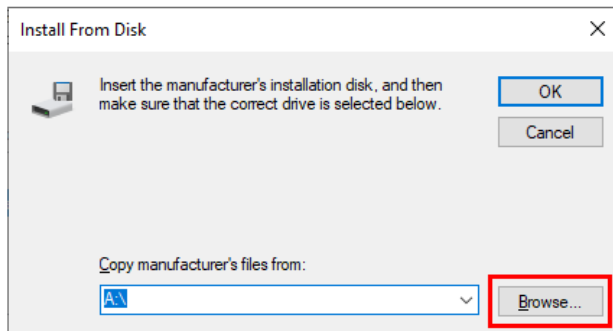


# RNDIS Windows Driver Installation Guide

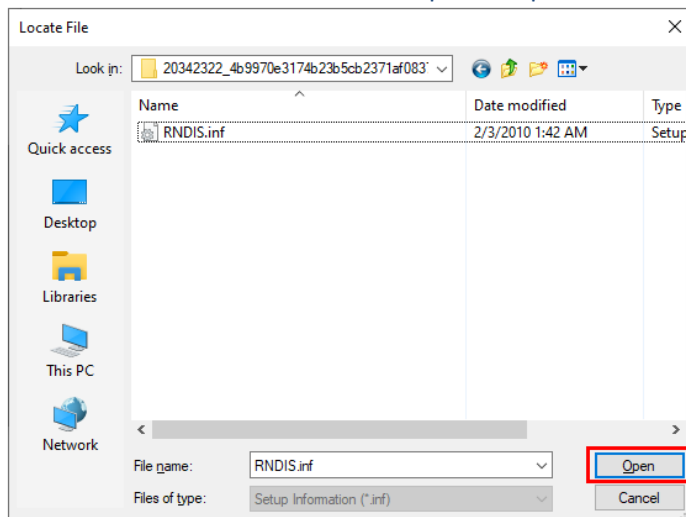
5. Press the “Have Disk...” button.



6. Press the “Browse...” button and navigate to the driver you downloaded.

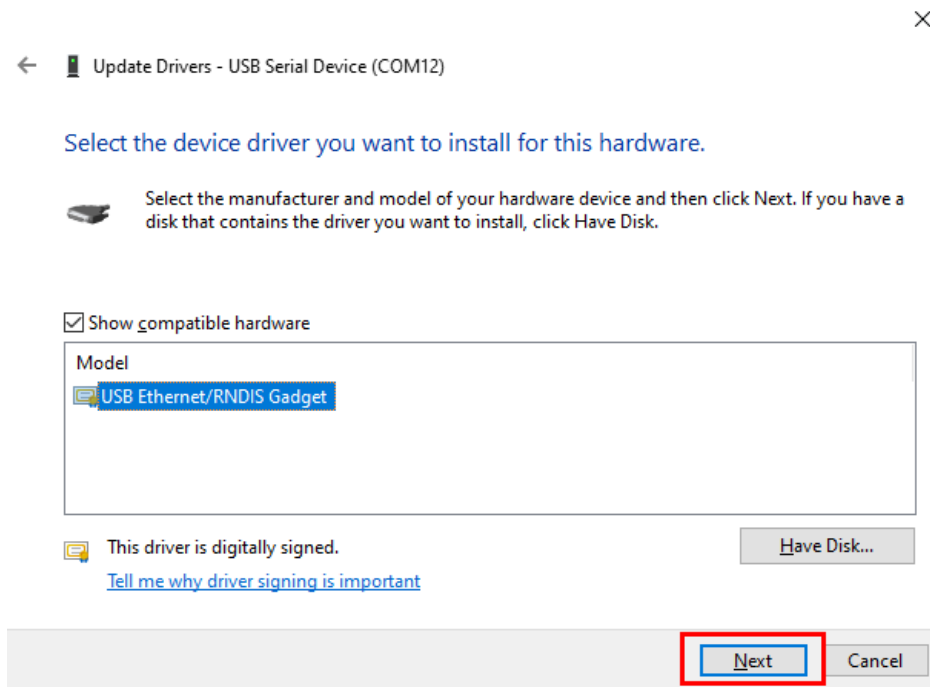



7. Select “RNDIS.inf” from the list and press “Open” and then press “OK” from the next screen.



# RNDIS Windows Driver Installation Guide

8. Select the “USB Ethernet/RNDIS Gadget” and press Next to load the driver.



9. After the driver update is complete, press “OK” to exit the driver update screen.
10. Power off the scanner and back on again.
  - a. Make sure the USB cable is still connected before powering back on.
11. The scanner will now have a “USB Ethernet/RNDIS Gadget” under the “Network adapters” in Device Manager.
  - 12. The screenshot shows the 'Network adapters' section expanded in Device Manager. The list includes: Bluetooth Device (Personal Area Network), Fibocom L850-GL, Hyper-V Virtual Ethernet Adapter, Intel(R) Ethernet Connection (7) I219-V, Intel(R) Wi-Fi 6 AX200 160MHz, TAP-Windows Adapter V9 for OpenVPN Connect, and USB Ethernet/RNDIS Gadget. The 'USB Ethernet/RNDIS Gadget' entry is highlighted in blue.
  - 13. The default scanner IP will be 192.168.2.1.
  - 14. The scanner is now ready to be used as a USB Ethernet/RNDIS Gadget.