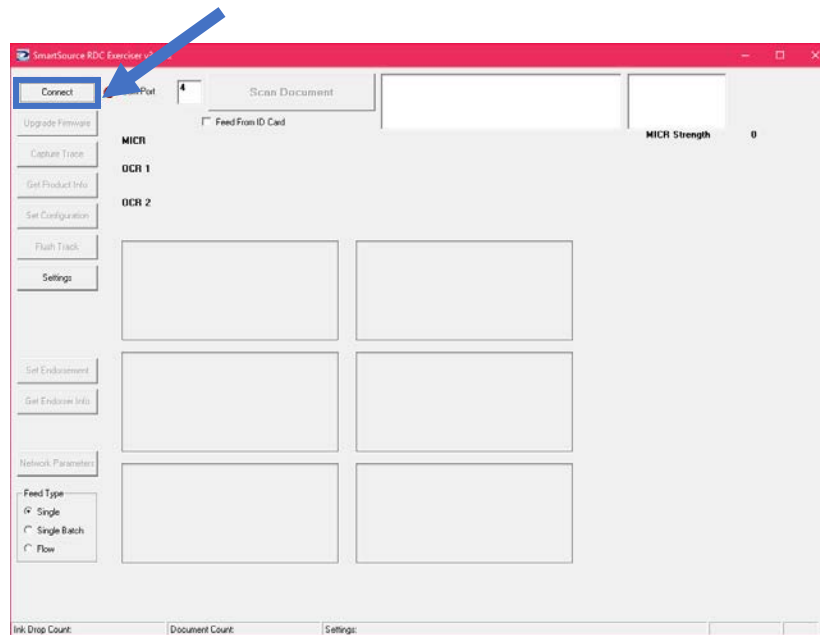


SmartSource RDC Exerciser IP Configuration

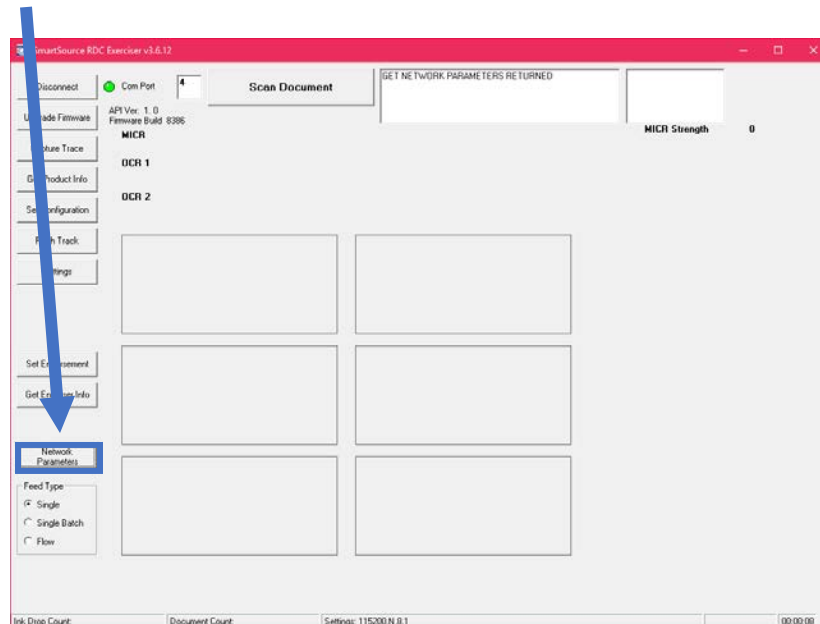
CONNECTING THE EXPERT ELITE

- After installing the RDC Exerciser, connect the Expert Elite to the PC via USB and power the scanner on.
- Launch the RDC Exerciser.
 - Click Connect to connect to the scanner.

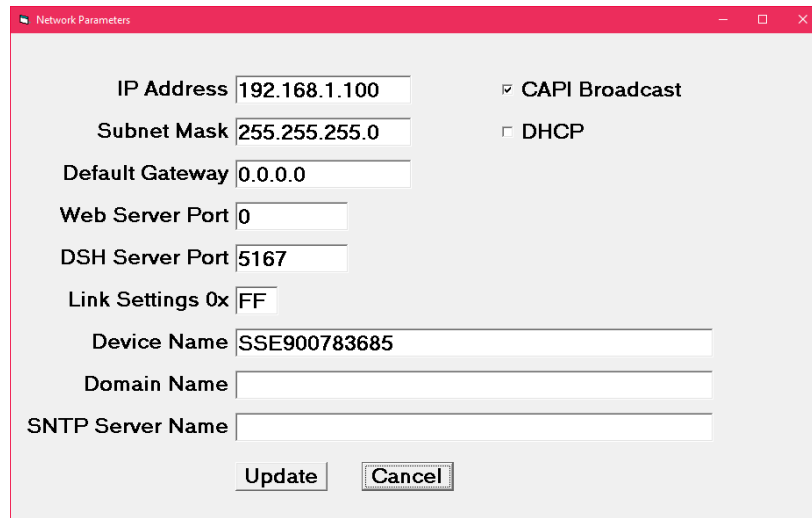


SETTING NETWORK PARAMETERS

- Click Network Parameters.



SETTING NETWORK PARAMETERS (CONT.)



IP Address	192.168.1.100	<input checked="" type="checkbox"/> CAPI Broadcast
Subnet Mask	255.255.255.0	<input type="checkbox"/> DHCP
Default Gateway	0.0.0.0	
Web Server Port	0	
DSH Server Port	5167	
Link Settings 0x	FF	
Device Name	SSE900783685	
Domain Name		
SNTP Server Name		
<div>Update Cancel</div>		

- The Network Parameters screen.
 - If scanner is to be used on a DHCP network.
 - Check the DHCP option.
 - Leave all other settings at default.
 - If the scanner is to be used on a fixed IP network.
 - Set the IP address, Subnet, and Default Gateway to match the network.
 - Do not change any other parameters without explicit instructions to do so.
 - Once the parameters are configured, click Update.
 - The Network Parameters screen will close.

TESTING THE NEW SCANNER PARAMETERS

- Click Disconnect on the RDC Exerciser.
- Power down the scanner and disconnect the USB cable.
- Connect the scanner to the network via ethernet.
 - The scanner can be pinged using either the IP address or device name.