



SmartSource® Series

Conteúdo da Caixa

As variações dependem do estilo requisitado

Obtenha Ajuda ou Informações Gerais do Produto no site:

www.digitalcheck.com

Supplies

Para a compra de suprimentos homologados através da Burroughs Payment Systems ou de seus revendedores contate a Burroughs acessando o site: www.digitalcheck.com.

4326 9810-006

Cabo do Ethernet ou Cabo USB



! Ainda não conecte um cabo USB ao PC/ unidade! Verifique com o gerente/ administrador! O software deve ser carregado no PC antes de o cabo USB ser conectado!

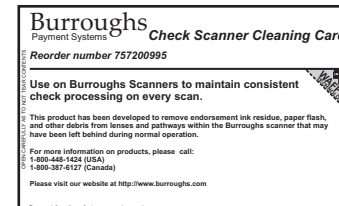
Cabo de alimentação CA



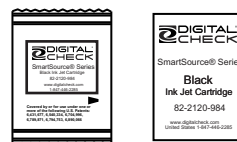
Fonte de alimentação



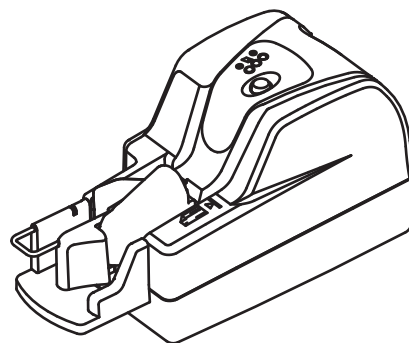
Cartão de Limpeza da Trilha do Scanner



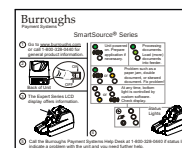
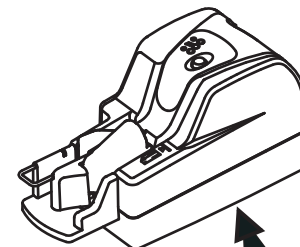
Cartucho de impressão de jacto de tinta (Opcional)



Endossador Carimbo (Opcional)



SmartSource® Series



Cartão de referência

Guardar debaixo da unidade.

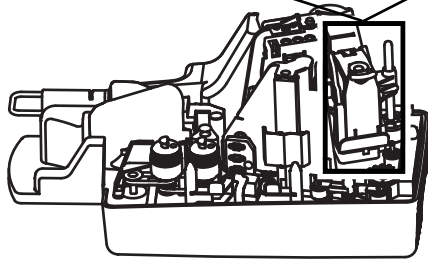
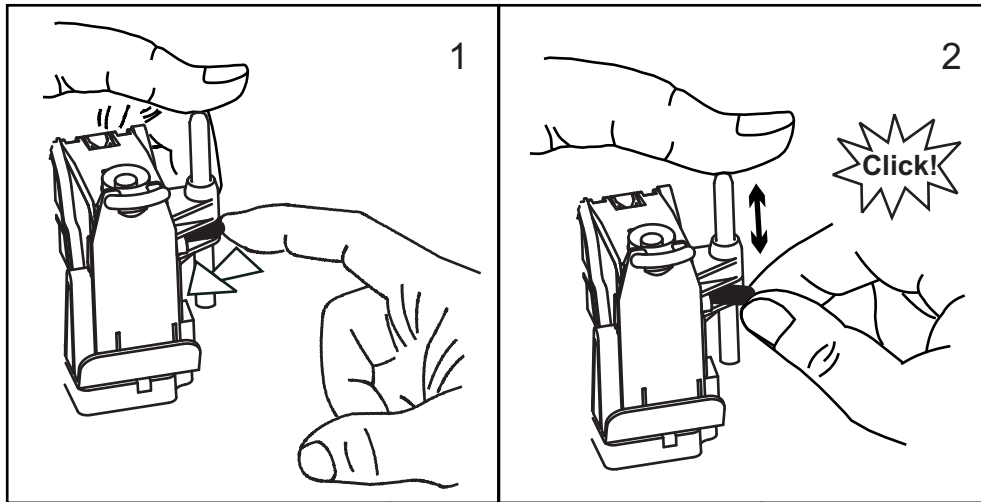
Ler esta folha primeiro

Ler esta folha primeiro

This SmartSource Professional has an easy-open endorser and an automatic flag. Here's what you should know when working with these features.

The endorser height can be manually adjusted to one of two print positions:

Press the tab toward the cartridge to release it. Then, slide the cartridge housing up or down to the desired height until it clicks into place.



Caution

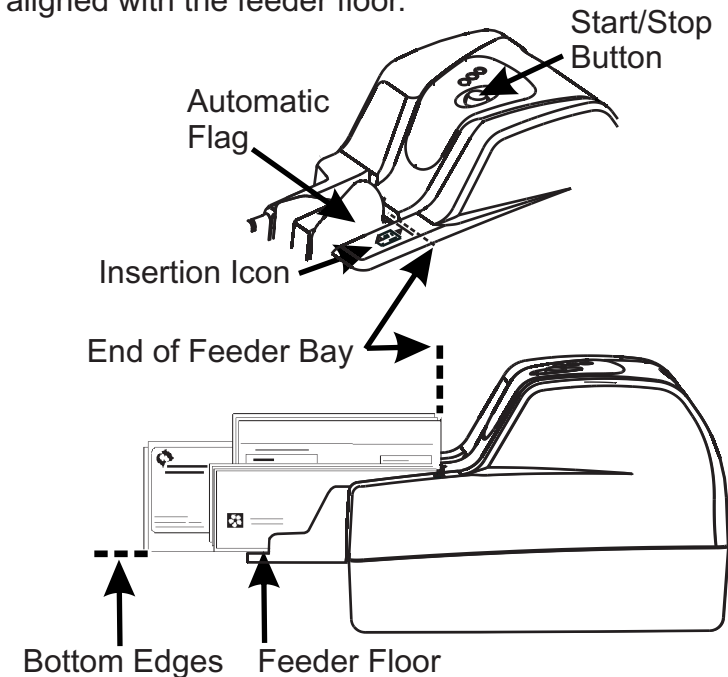
When processing the smallest documents, (minimum size for documents is 2.9 in. X 2.0 in.), the endorser top print position is too high to endorse properly. Check that the endorser top print position is correct when feeding small documents.

- The automatic feeder flag enables easy paper loading in the feeder bay. This flag is open/positioned toward the center of the unit before the feeder is loaded, and before document processing begins. *You do not have to push the flag back toward the center of the unit to load paper into the feeder.*

To feed paper, wait for two green LED status lights on the top of the unit.

Insert documents into the feeder bay, one at a time, or in batches that fit easily in the feeder. Slide them forward to the end of the feeder bay.

There is an insertion icon on the unit that shows the end of the feeder bay. Bottom edges of documents should touch and be aligned with the feeder floor.



- Initiate document processing. Use either your application software user interface, or press and release the Start/Stop button.