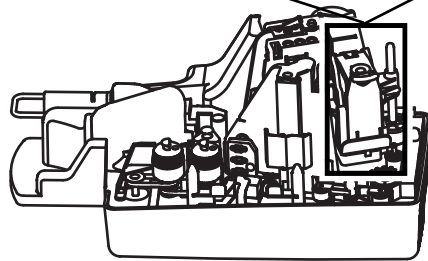
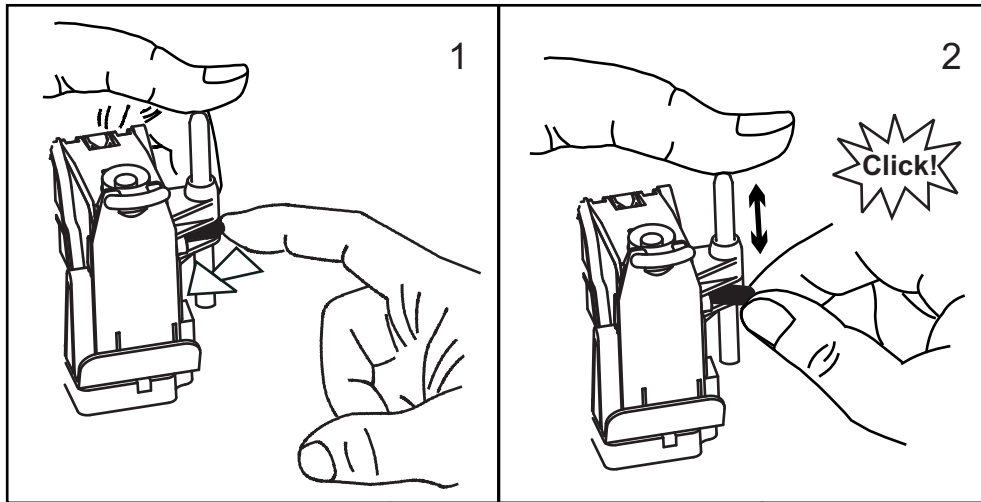




This SmartSource Professional has an easy-open endorser and an automatic flag. Here's what you should know when working with these features.

The endorser height can be manually adjusted to one of two print positions:

Press the tab toward the cartridge to release it. Then, slide the cartridge housing up or down to the desired height until it clicks into place.



### Caution

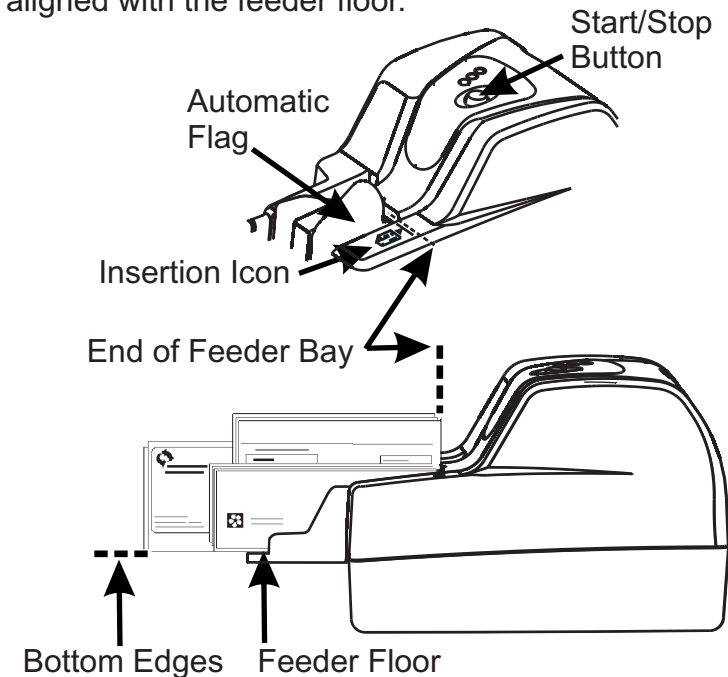
When processing the smallest documents, (minimum size for documents is 2.9 in. X 2.0 in.), the endorser top print position is too high to endorse properly. Check that the endorser top print position is correct when feeding small documents.

- The automatic feeder flag enables easy paper loading in the feeder bay. This flag is open/positioned toward the center of the unit before the feeder is loaded, and before document processing begins. *You do not have to push the flag back toward the center of the unit to load paper into the feeder.*

To feed paper, wait for two green LED status lights on the top of the unit.

Insert documents into the feeder bay, one at a time, or in batches that fit easily in the feeder. Slide them forward to the end of the feeder bay.

There is an insertion icon on the unit that shows the end of the feeder bay. Bottom edges of documents should touch and be aligned with the feeder floor.



- Initiate document processing. Use either your application software user interface, or press and release the Start/Stop button.